

Testing Equipment & Civil Engineering

➤ Civil Engineering> Testing Instruments > Testing Machines	3
➤ Civil Engineering> Testing Instruments > Cement, Rebar and Concrete Testing	7
➤ Civil Engineering> Testing Instruments > Bitumen Testing	14
➤ Civil Engineering> Testing Instruments > Geosynthetic Material Testing	16
➤ Civil Engineering> Soil & Rock > Soil Equipment	19
➤ Civil Engineering> Soil & Rock > Rock Equipment	32
➤ Civil Engineering> Highway & Bridge Equipment	34
➤ Civil Engineering> Surveying>Surveying Equipment	39
➤ Civil Engineering> Other Equipment	45

VI

Testing Equipment & Civil Engineering

➤ Civil Engineering > Testing Instruments > Testing Machines



**Digital Display Type Building Material
Hydraulic Compression Testing Machine**
Part Number 0206000017



Flexural and Compression Testing Machine
Part Number 0206000018



Digital Electric Antiflex Testing Machine
Part Number 0206000020



**Digital Display Type Electronic Universal
Testing Machine (Single Arm Type)**
Part Number 0206000023



**Digital Display Type Electronic Universal
Testing Machine**
Part Number 0206000024



**Computer Control Type Electronic Universal
Testing Machine (Single Arm Type)**
Part Number 0206000025

➤ **Civil Engineering> Testing Instruments > Testing Machines**



**Computer Control Type Electronic Universal
 Testing Machine**
Part Number 0206000026



**Computer Control Type Electronic Universal
 Testing Machine**
Part Number 0206000027



Dial Type Hydraulic Universal Testing Machine
Part Number 0206000028



**Screen Display Type Hydraulic Universal
 Testing Machine**
Part Number 0206000029



**Screen Display Type Hydraulic Universal
 Testing Machine**
Part Number 0206000030



**Computer Control Electro-hydraulic Servo
 Universal Testing Machine**
Part Number 0206000031

➤ **Civil Engineering> Testing Instruments > Testing Machines**



**Electric-hydraulic Servo Dynamic & Static
Universal Testing Machine
Part Number 0206000032**



**Torsion Testing Machine
Part Number 0206000100**



**Computerized Torsion Testing Machine
Part Number 0206000101**



**Metal Wire Torsion Testing Machine
Part Number 0206000102**



**Semiautomatic Impact Testing Machine
Part Number 0206000501**



**Computer Control Electro-hydraulic
Compression Testing Machine
Part Number 0206000700**

➤ **Civil Engineering> Testing Instruments > Testing Machines**



**Digital Display Type Well Cover Hydraulic
Compression Testing Machine
Part Number 0206000702**



**Digital Display Type Concrete Drainpipe
pressure Testing Machine
Part Number 0206000703**



**Digital Display Type Building Material
Hydraulic Compression Testing Machine
Part Number 0206000704**

➤ **Civil Engineering> Testing Instruments > Cement, Rebar and Concrete Testing**



**Electric Hydraulic Stripper(Automatic Unloading overloading)
Part Number 0206010000**



**Electric Hydraulic Stripper(Automatic Unloading overloading)
Part Number 0206010001**



**Electric Multifunction Stripper
Part Number 0206010002**



**Cement Slump Test Apparatus
Part Number 0206010100**



**Slump Test Apparatus
Part Number 0206010101**



**Concrete Air Content Meter
Part Number 0206010200**

➤ **Civil Engineering> Testing Instruments > Cement, Rebar and Concrete Testing**



Concrete Air Content Meter
Part Number 0206010201



Concrete Mixture Consistometer
Part Number 0206010300



Concrete Elastic Modulus Meter
Part Number 0206010400



Concrete Penetration Resistance Meter
Part Number 0206010500



Digital Concrete Penetration Resistance Apparatus
Part Number 0206010501



Digital Display Concrete Bolt Tensiometer
Part Number 0206010600

➤ **Civil Engineering> Testing Instruments > Cement, Rebar and Concrete Testing**



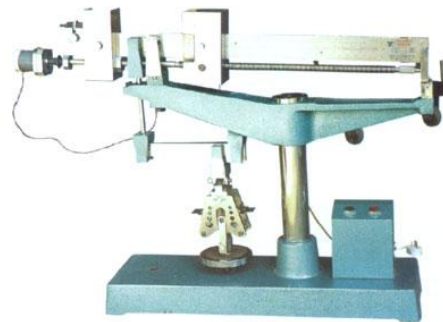
Concrete Vibrating Table Tester
Part Number 0206010700



Mortar Mixer
Part Number 0206010800



Intelligent Concrete Permeability Apparatus
Part Number 0206010900



Electric Bending Resistance Tester
Part Number 0206011000



Cement Mortar Mixer
Part Number 0206011100



Cement Mortar Mixer
Part Number 0206011101

➤ **Civil Engineering> Testing Instruments > Cement, Rebar and Concrete Testing**



Cement Mortar Plain Bumper
Part Number 0206011200



Negative Pressure Sieving Analysis Meter
Part Number 0206011300



Digital Control Cement Silicon Maintenance
Box
Part Number 0206011400



Boiling Tank
Part Number 0206011500



Cement Mortar Fluidity Meter
Part Number 0206011600



Cement Paste Consistometer
Part Number 0206011700

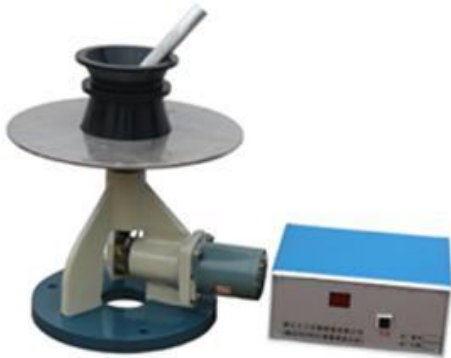
➤ **Civil Engineering> Testing Instruments > Cement, Rebar and Concrete Testing**



Mortar Consistency Meter
Part Number 0206011800



Mortar layer Meter
Part Number 0206011900



Motorized Cement Mortar Table
Part Number 0206012000



Electric Blaine Air Permeability Apparatus
Part Number 0206012100



One Square Meter Jarring Table
Part Number 0206012200



Concrete Horizontal Mixer
Part Number 0206012300

➤ **Civil Engineering> Testing Instruments > Cement, Rebar and Concrete Testing**



Esclerometer for concrete test (Smidt hammer)

Part Number 0206012400



Multifunction Concrete Hollow Boring Machine

Part Number 0206012500



Standard Concrete Curing Cabinet

Part Number 0206012600



Cement Constant Temperature Water Curing Cabinet

Part Number 0206012700



Low Temperature Testing Cabinet

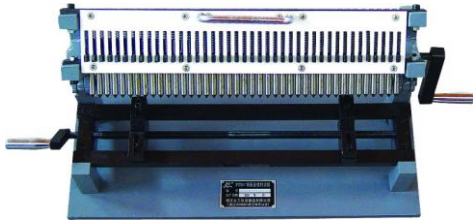
Part Number 0206012800



Fast Concrete Curing Cabinet

Part Number 0206012900

- **Civil Engineering > Testing Instruments > Cement, Rebar and Concrete Testing**



Continuous Steel Bar Striking Machine
Part Number 0206013000

➤ **Civil Engineering > Testing Instruments > Bitumen Testing**



Computer-based Automatic Penetrometer
Part Number 0206020000



Micro Locale Penetrometer
Part Number 0206020001



**Computer-based Fully Automatic Softening
 Point Tester**
Part Number 0206020100



Asphalt Ductility Test Apparatus
Part Number 0206020200



Bitumen Rotary Film Drying Chamber
Part Number 0206020300



Automatic Mixture Mixer
Part Number 0206020400

➤ **Civil Engineering > Testing Instruments > Bitumen Testing**



Bitumen High-speed Extraction Apparatus
Part Number 0206020500



Bituminous Trichloroethylene Extractor
Part Number 0206020600



Asphalt Mixture Maximum Theory Density Meter
Part Number 0206020700

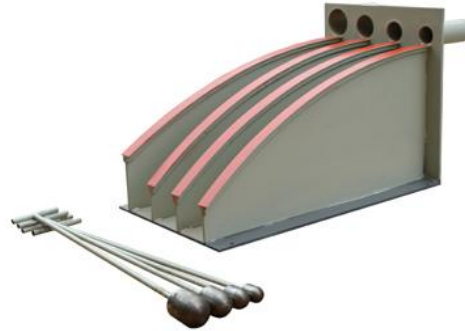


Asphalt Particle Ionic Charge Testing Apparatus
Part Number 0206020800

➤ **Civil Engineering > Testing Instruments > Geosynthetic Material Testing**



Drop Hammer Penetrate Tester
Part Number 0206030000



Plastic Ripple Flexible Pipe Tester
Part Number 0206030100



Geosynthetic Materials Equivalent Aperture Tester
Part Number 0206030200



Geosynthetic Materials Silting Apparatus
Part Number 0206030300



Geosynthetic Materials Direct Shear Apparatus
Part Number 0206030400



Civil Engineering Synthetic Material Test Apparatus
Part Number 0206030500

➤ **Civil Engineering> Testing Instruments > Geosynthetic Material Testing**



Membrane Welding Apparatus
Part Number 0206030600



Drain-board Drainage Test Apparatus
Part Number 0206030700



Geomembrane Impervious Apparatus
Part Number 0206030800



Geosynthetic Materials Tearing Trial Test Apparatus
Part Number 0206030900



Geosynthetic Materials Vertical Permeameter Apparatus
Part Number 0206031000



Geosynthetic Thickness Materials Apparatus
Part Number 0206031100

➤ **Civil Engineering > Testing Instruments > Geosynthetic Material Testing**



**Geotechnological Cloth Bursting & Puncture
Test Apparatus
Part Number 0206031200**

➤ **Civil Engineering> Soil & Rock > Soil Equipment**



Compression Test Machine

Part Number 0206100000



**Strain Controlled Unconfined Compression
Test Apparatus**

Part Number 0206100001



Photoelectric Liquid And Plastic Limit Tester

Part Number 0206100100



Consolidation Apparatus

Part Number 0206100200



Light- duty Consolidation Apparatus

Part Number 0206100201



Triplex Mid-pressure Consolidation Apparatus

Part Number 0206100202

➤ **Civil Engineering> Soil & Rock > Soil Equipment**



Light-duty Consolidation Apparatus
Part Number 0206100203



Pore Water Pressure Measuring Apparatus
Part Number 0206100204



KO Consolidation Apparatus
Part Number 0206100205



Triplex Mid-pressure Consolidation Apparatus
Part Number 0206100206



**Electric Strain Controlled Unconfined
Compression Apparatus**
Part Number 0206100207



Electric Sample Ejector
Part Number 0206100300

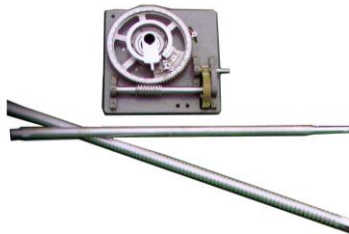
➤ Civil Engineering > Soil & Rock > Soil Equipment



Hydraulic Sample Ejector
Part Number 0206100301



Strain Controlled Direct Shear Apparatus
Part Number 0206100400



Cross Plate Shear Apparatus
Part Number 0206100401



**Stress-strain Controlled Shear Permeated
Triaxial Test Apparatus**
Part Number 0206100402



**Quadruplex Strain Controlled Direct Shear
Apparatus**
Part Number 0206100403



Direct Shear Prepressing Apparatus
Part Number 0206100404

➤ **Civil Engineering> Soil & Rock > Soil Equipment**



Digital Electric Strain Direct Shear Testing Apparatus

Part Number 0206100405



Light-duty Triaxial Test Apparatus

Part Number 0206100406



Permeameter

Part Number 0206100500



Permeameter

Part Number 0206100501



Digital Controlled Electric Soil Compactor

Part Number 0206100600



Digital Controlled Marshall Compactor

Part Number 0206100601

➤ Civil Engineering> Soil & Rock > Soil Equipment



Digital Surface Vibration Compactor
Part Number 0206100602



Semirigid Base Vibration Forming Compactor
Part Number 0206100603



Hand Compactor
Part Number 0206100604



Digital Multifunction Electric Portable Compactor
Part Number 0206100605



Soil Densimeter
Part Number 0206100700



Soild Humidity And Densty Test Apparatus
Part Number 0206100701

➤ Civil Engineering> Soil & Rock > Soil Equipment



Soil hydrometer
Part Number 0206100702



Three-dimensional Shaking Sieve Machine
Part Number 0206100800



High-frequency Sieve Shaker
Part Number 0206100801



Marshall Stability Tester
Part Number 0206100900



CBR Test Machine
Part Number 0206101000



CBR Value Test Apparatus
Part Number 0206101001

➤ **Civil Engineering> Soil & Rock > Soil Equipment**



Digital CBR Tester
Part Number 0206101002



Dynamometer Ring
Part Number 0206101100



**CBR Accessories for Water Immersion
Expansion**
Part Number 0206101101



Electric Relative Density Meter(Improved)
Part Number 0206101200



Large Pulverizing Machine
Part Number 0206101300



Disc Type Liquid Limit Device
Part Number 0206101400

➤ **Civil Engineering> Soil & Rock > Soil Equipment**



**Photoelectricity Liquid Plastic Limit United
 Device(76g 100g)**
Part Number 0206101401



Digital Liquid Plastic Limit United Device
Part Number 0206101402



Liquid Limit
Part Number 0206101403



**Vibration Table Method Max. Dry Density
 Tester**
Part Number 0206101500



Bench Triaxial Test Apparatus
Part Number 0206101600



Automatic Triaxial Test Apparatus
Part Number 0206101601

➤ Civil Engineering > Soil & Rock > Soil Equipment



Resilience Modulus Test Apparatus
Part Number 0206101700



Pendulum Type Frictional Coefficient Tester
Part Number 0206101800



Laminated Saturator
Part Number 0206101900



Trimming Plate
Part Number 0206102000



Soil Sampler
Part Number 0206102100



Auger
Part Number 0206102101

➤ Civil Engineering > Soil & Rock > Soil Equipment



Soil Riffle Box
Part Number 0206102200



Stainless Steel Cutting Ring
Part Number 0206102300



Aluminum Sample Box
Part Number 0206102400



Swell Test Apparatus
Part Number 0206102500



Swell Test Apparatus
Part Number 0206102501



Contracting Test Apparatus
Part Number 0206102600

➤ Civil Engineering> Soil & Rock > Soil Equipment



Retractometer (Contracting) Test Apparatus
Part Number 0206102601



Natural Consistency Meter
Part Number 0206102700



Natural Gradient Apparatus
Part Number 0206102800



Soil Hardometer
Part Number 0206102900



Digital Moisture Fast Tester
Part Number 0206103000



Moisture Tester
Part Number 0206103001

➤ Civil Engineering> Soil & Rock > Soil Equipment



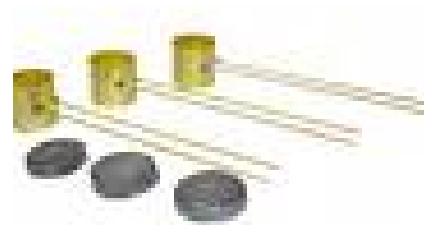
Automatic Sand Equivalent Test Apparatus
Part Number 0206103200



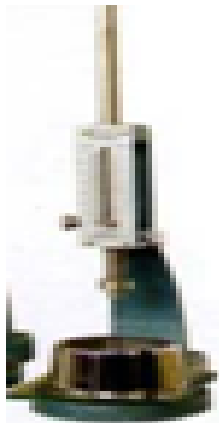
Sand Equivalent Test Box
Part Number 0206103300



Expansion Coefficient Tester of Le Chatelier Mould
Part Number 0206103400



Le Chatelier Mould
Part Number 0206103500



New Standard Vicat Apparatus
Part Number 0206103600



Anti-pressure Fixture
Part Number 0206103700

➤ **Civil Engineering > Soil & Rock > Soil Equipment**



Cement Sampler Cask
Part Number 0206103800

➤ Civil Engineering> Soil & Rock > Rock Equipment



Rock Index Crush Determiner
Part Number 0206110000



Point Load Tester
Part Number 0206110100



Los Angeles Splitter Abrasion Testing Machine
Part Number 0206110200



Thin Aggregate Pointedness Meter
Part Number 0206110300



Thin Aggregate Pointedness Motorized Meter
Part Number 0206110301



Aggregate Impact Tester
Part Number 0206110400

➤ **Civil Engineering> Soil & Rock > Rock Equipment**



Stainless Steel Proportional Caliper Device
Part Number 0206110500

➤ **Civil Engineering> Highway & Bridge Equipment**



Road Surface Drilling And Coring Machine
Part Number 0206200000



Concrete Smoother
Part Number 0206200100



Stamping Rammer
Part Number 0206200200



Steel Bar Cutting Machine
Part Number 0206200300



Plate Compactor
Part Number 0206200400

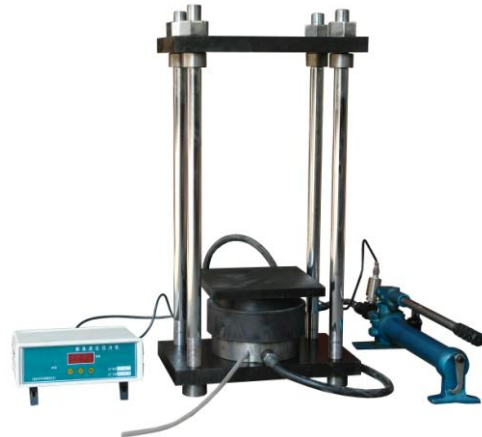


Gasoline Engine Concrete Vibrator
Part Number 0206200500

➤ **Civil Engineering> Highway & Bridge Equipment**



High Strength Friction Grip Bolt Survey meter
Part Number 0206200600



Original Position Compression Machine
Part Number 0206200700



Rubber Bearing anti-Cuts and Anti- pressure Tester
Part Number 0206200800



Manhole Cover Pressure Tester
Part Number 0206200900



Mortar Cylinder
Part Number 0206201000



Reaction Force Framework
Part Number 0206201100

➤ Civil Engineering> Highway & Bridge Equipment



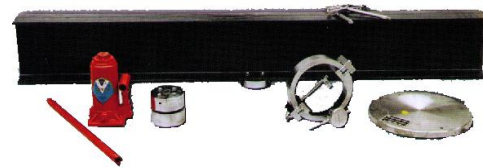
New Pavement Moisture Permeameter
Part Number 0206201200



Road Surface Flatness Meter
Part Number 0206201300



Pavement Resilience Test Apparatus
Part Number 0206201400



Soil Base Resilience Test Apparatus
Part Number 0206201500



Pavement Material Strength Test Apparatus
Part Number 0206201600



Sand Density Cone
Part Number 0206201700

➤ **Civil Engineering> Highway & Bridge Equipment**



Electrical Sand Tester
Part Number 0206201800



Capillary Bundle Water Height Meter
Part Number 0206201900



Bar Cutter
Part Number 0206202000



Bar Bender
Part Number 0206202001



**Automatic Steel Bar Straightening and
Cutting Machine**
Part Number 0206202002



Concrete Vibrator Shaft
Part Number 0206202003

➤ **Civil Engineering> Highway & Bridge Equipment**



Concrete Vibrator
Part Number 0206202004



Concrete Mixer
Part Number 0206202005



Grinder Concrete Vibrator
Part Number 0206202006



Plate Compactor
Part Number 0206202007



Steel Bar Threading Machine
Part Numbe 0206202008



Acceleration Grinder
Part Number 0206202100

➤ Civil Engineering> Surveying> Surveying Equipment



Automatic Level
Part Number 0206300000



Auto Level
Part Number 0206300001



4m Metal Telescoping Leveling Staff
Part Number 0206300002



Digital Level
Part Number 0206300003



Distomat
Part Numbe 0206300100



Ranging Pole 5u
Part Number 0206300200

➤ Civil Engineering> Surveying> Surveying Equipment



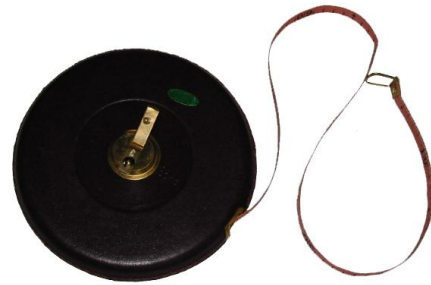
50m Steel Tape 50m
Part Number 0206300300



30m Steel Tape 30m
Part Number 0206300301



30m Fabric Tape 30m
Part Number 0206300302



50m Fabric Tape 50m
Part Number 0206300303



Heavy Duty Wooden Tripod
Part Numbe 0206300400



Electronic Theodolite
Part Number 0206300500

➤ Civil Engineering> Surveying>Surveying Equipment



Total Station 5", 2MM+2PPM
Part Number 0206300600



Total Station
Part Number 0206300601



Total Station
Part Number 0206300602



Total Station
Part Number 0206300603



Total Station
Part Number 0206300604



Total Station
Part Number 0206300605

➤ **Civil Engineering> Surveying> Surveying Equipment**



RTK GPS

Part Number 0206300700



Integrated Static GPS
Part Number 0206300702



Single Frequency GPS RTK
Part Number 0206300704



Integrated Static GPS
Part Number 0206300701



Single Frequency GPS Static
Part Number 0206300703



GPS
Part Number 0206300705

➤ Civil Engineering> Surveying> Surveying Equipment



High-Precision Handheld Data-collecting System

Part Number 0206300706



Single Frequency Digital Echo Sounder

Part Number 0206300707



Beacon Receiver

Part Number 0206300708



Pocket Compass Model

Part Number 0206300800



Forestry Compass Model

Part Numbe 0206300801

➤ Civil Engineering> Surveying> Geological Equipment



High-Resolution Seismograph
Part Number 0206310000



Multi-Function DC Resistivity Meter
Part Number 0206310100

➤ Civil Engineering➤ Other Equipment



Ultrasonic Flow Detector
Part Number 0206400000



Ultrasonic Thickness Gauge
Part Number 0206400001



Digital Flaw Detector
Part Number 0206400002



Digital Flaw Detector
Part Number 0206400003



Digital Flaw Detector
Part Number 0206400004



Digital Flaw Detector
Part Number 0206400005

➤ **Civil Engineering> Other Equipment**



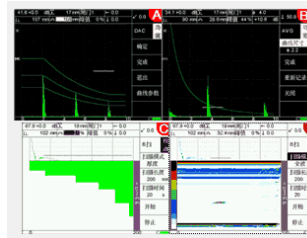
Digital Flow Detector
Part Number 0206400006



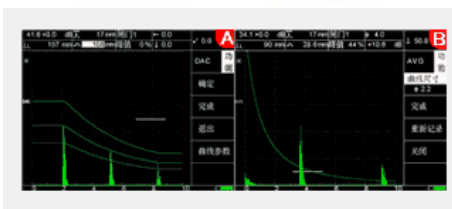
Digital Flow Detector
Part Number 0206400007



Digital Flow Detector
Part Number 0206400008



Digital Flow Detector
Part Number 0206400009



Digital Flow Detector
Part Number 0206400010



Digital Flow Detector
Part Number 0206400011

➤ Civil Engineering> Other Equipment



Digital Flow Detector

Part Number 0206400012



Digital and Multi-channel Ultrasonic Flow Detector

Part Number 0206400013



General Purpose Analog Ultrasonic Flow Detector

Part Number 0206400014



General Purpose Analog Ultrasonic Flow Detector

Part Number 0206400015



General Purpose Analog Ultrasonic Flow Detector

Part Number 0206400016



General Purpose Analog Ultrasonic Flow Detector

Part Number 0206400017

➤ Civil Engineering> Other Equipment



**General Purpose Analog Ultrasonic Flaw
Detector
Part Number 0206400018**



**General Purpose Analog Ultrasonic Flaw
Detector
Part Number 0206400019**



**General Purpose Analog Ultrasonic Flaw
Detector
Part Number 0206400020**



**General Purpose Analog Ultrasonic Flaw
Detector
Part Number 0206400021**



**Ultrasonic Analyzer for Nonmetal
Part Number 0206400022**



**Ultrasonic Thickness Gauge
Part Number 0206400023**

➤ Civil Engineering> Other Equipment



Ultrasonic Thickness Gauge
Part Number 0206400024



Light Dynamic Penetration Testing Apparatus
Part Number 0206400100



Static Penetration Testing Apparatus
Part Number 0206400101



Sand Funnel
Part Number 0206400200



Stone Funnel
Part Numbe 0206400201



**Standard Hardened Steel Test Cylinder Iron
Vessel Set**
Part Number 0206400202

➤ Civil Engineering> Other Equipment



Digital Display Hydrostatical Dynamics Balance
Part Number 0206400203



Mesh
Part Number 0206400204



Triple Beam Balance (250G/0.1G)
Part Number 0206400208



Platform Scale
Part Number 0206400209



Slurry Hydrometer
Part Numbe 0206400216



Slurry Sand Content Meter
Part Number 0206400217

➤ Civil Engineering> Other Equipment



Slurry Viscometer
Part Number 0206400218



Shapmann Specific Gravity Flask
Part Number 0206400219